
STM32F1-MC-IPM50 motor control kit

Description:

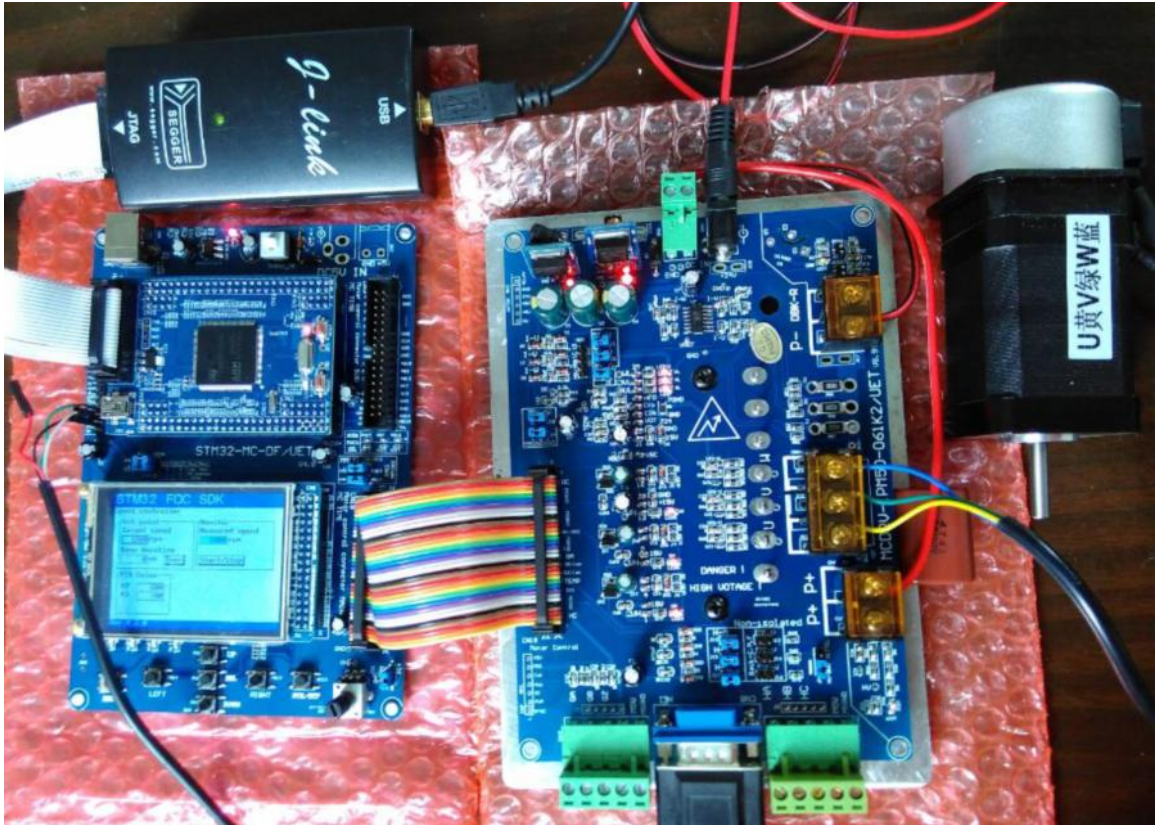
The STM32F1-MC-IPM50/UET motor control kit consists of six parts: a 24V3A adaptor, a main control board, a drive board, a PMSM motor, a serial line and a JLINK debugger. The main board with 2.8" TFT LCD is based on ST MCU stm32f103zet6. The drive board is mainly using IPM module to drive a PMSM motor or a BLDC motor. With the JTAG interface you can use debugger STLINKIII or JLINK test your program.

Features:

- MCU: STM32F103ZET6, 32BIT ARM CORTEX-M3
- With power input DC 18v~300V, typical 24V
- Large power drive: 600V 5.5KW IPM module
- Typical configure: 24V PMSM with 1000 pulses encoder
- With hall connector, encoder connector and UVW connector
- sin wave or square wave drive
- three shunt current sampling
- easy human interface: 2.8" TFT LCD, 6 user keys, 4 LEDs, RXD TXD connector or DA channel output
- support BLDC, PMSM or ACIM motor control
- With rich examples. With ST FOC V5.1 examples and other easy examples.

Order NO: STM32F1-MC-IPM50

Photo:



简介:

STM32F1-MC-IPM50/ UET 电机控制套件含六部分：电源、主控制板、驱动板、一个 PMSM 电机、串口线和仿真调试工具一套。主控板上自带一个 2.8 ‘TFT LCD，采用 STM32F103ZET6 芯片。驱动板主要采用进口 IPM 模块驱动电机。用户可能过 STLINK 或 JLINK 下载程序并进行调试运行。

特点:

- 采用 32 位 CORTEXM3 内核的 CPU：STM32F103ZET6
- 采用核心板+主控底板+功率板结构，方便调试与维修
- 宽电压输入：DC 18V~300V,标配 24V 电源
- 大功率驱动：配置 600V 5.5KW IPM 功率模块，
- 典型配置： 24V PMSM 带 HALL 及 1000 线编码器
- HALL 输入、光电编码器输入，反电动势侦测，多种有/无传感器控制方式
- 120° 方波、180° 正弦波控制方式，FOC 矢量控制方式
- 三电阻电流检测，过流停车保护（全隔离霍尔电流检测方式可选配）
- 方便的人机界面：TFT 液晶显示、6 按键、电位器、4 个 LED 灯、串行通信接口
- 双电机控制接口，支持 BLDC、PMSM、ACIM（三相交流异步）电机控制
- 例程非常丰富，包括自编的以源码方式提供的进阶式的例程，还有移植好 ST FOC PMSM V5.1 电机库例程。（本套件基本兼容 ST 官方双电机控制板）

订单编号:

- STM32F1-MC-IPM50