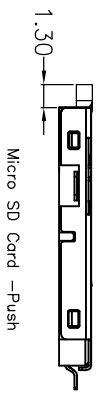
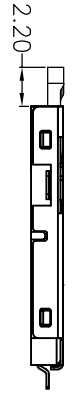
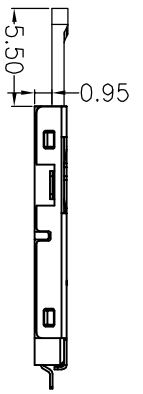
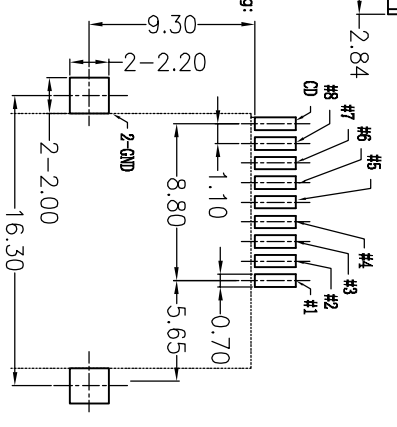
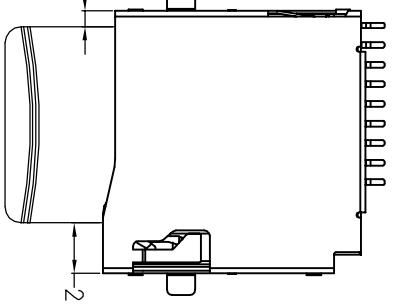
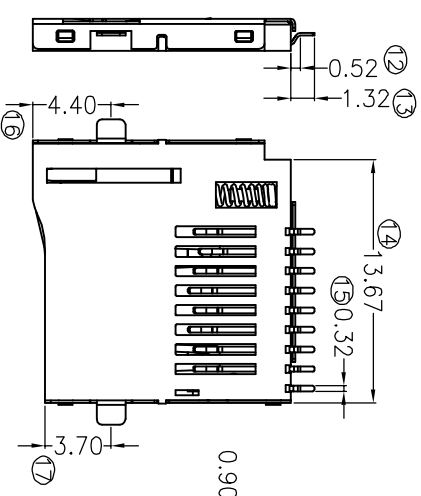
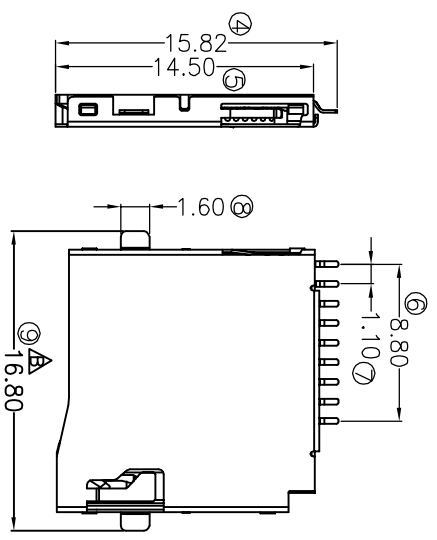
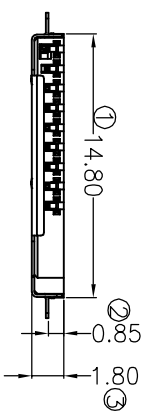


REV.	EQN. NO.	MODIFY CONTENT	DATE
A		NEW	2012/08/03



**Specification**

**MATERIAL:**  
Insulator: High Temperature Thermoplastic,  
UL 94V-0.

**PLATING:**  
Contact: Copper Alloy

**Electrical:**  
Contact: Plated 50u" Ni Overall  
Plated Au Selective Contact Area  
Shell: Plated 50u" Ni Overall  
Plated 1u" Au Selective Contact Area

Current Rating :0.5mA AC/DC max.  
Voltage Rating :125V AC/DC  
Ambient Temperature Range :-20°C~+60°C  
Storage Temperature Range :-40°C~+70°C  
Ambient Humidity Range :5% R.H. Max.  
Contact Resistance:100mΩmin./500VDC  
Insulation Resistance:100MΩmin./500VDC  
Mating Cycles:10,000 Insertions  
产品耐温范围: 260°C

PIN NO.	PIN ASSIGNMENT
1#	DMT2 信号
2#	CD/DAT3 信号
3#	GND 数据输入
4#	VDD 电压/电
5#	CLK 时钟
6#	VSS 接地
7#	DAT0 信号
8#	DAT1 信号
9#	CD 检测端

GENERAL TOLERANCE	DWG NO.
X±0.5	X±.5
.X±0.25	.X±.2
.XX±0.15	.XX±.1

GENERAL TOLERANCE	DWG NO.	APPD:	WIND	Scale
JYSAD915-002	JYS-TF180-024	CHKD:		1:1
T CARD 外焊 沉板 PUSH	Date	DR:		UNIT
.XX±0.15	2012/08/03			mm
SHEET 1/1				

JYS 杰宇森电子有限公司  
JIE YU SEN ELECTRONIC CO., LTD.